



Demonstration and mainstreaming of nature-based Solutions for Climate Resilient transformation in the Mediterranean



# Geotechnical Chamber of Greece Branch of Eastern Macedonia

DesirMED Adaptation Day, 19/03/2026, Kavala (Greece)

[Theodoros Abelidis / Mystakidis Zafeirios, GEOT.E.E. A.M.]

Swiss participants in this project are funded by



Schweizerische Eidgenossenschaft  
Confédération suisse  
Confederazione Svizzera  
Confederaziun svizra

Swiss Confederation

Federal Department of Economic Affairs,  
Education and Research EAER  
State Secretariat for Education,  
Research and Innovation SERI

This work has received funding from the Swiss State Secretariat for Education, Research and Innovation (SERI).



Funded by  
the European Union

Grant Agreement No. 101112972



01

Who are we?

02

Our engagement in Climate Adaptation

03

Our experience in NbS implementation



ΓΕΩΤΕΧΝΙΚΟ  
ΕΠΙΜΕΛΗΤΗΡΙΟ  
ΕΛΛΑΔΑΣ  
ΠΑΡΑΡΤΗΜΑ ΑΝ. ΜΑΚΕΔΟΝΙΑΣ



ΓΕΩΤΕΧΝΙΚΟ  
ΕΠΙΜΕΛΗΤΗΡΙΟ  
ΕΛΛΑΔΑΣ



# Who are we?

The Geotechnical Chamber of Greece (GEOT.E.E.) is a Legal Entity of Public Law (N.P.D.D.), supervised by the Ministry of Rural Development and Food.

- The Eastern Macedonia Branch, headquartered in Kavala and responsible for the Prefectures of Kavala, Drama and Serres
- The GEOT.E.E. is the statutory advisor to the state (scientific advisor) on issues of economic and social development of the countryside (primary sector of economy) and always tries to take into account the "environment" factor, its respect and protection.





# The Geotechnical Chamber of Greece (GEOT.E.E.)

Its members (45,232 in number - 2024) are all scientists of the specialties:

Agriculture

Forestry

Geology

Veterinary medicine

Ichthyology (biology-ichthyology)



All of them are graduates from Greek and foreign Universities



# Our engagement in Climate Adaptation

The Eastern Macedonia Branch of GEOT.EE. in recent years he has participated in numerous programs and projects related to climate change, dealing with climate change, or our adaptation to it. For example, we mention:

- Preventing the burning of crop residues in Tenagi Philippi and other agricultural lands
- Participation in environmental programs, as a scientific and social body, such as:
  - Pontos Program of the D.P.Th. and now the DesirMED programm
  - COPE program of the Municipality of Kavala
  - DigiMedFor program of the Municipality of Kavala



# Our engagement in Climate Adaptation

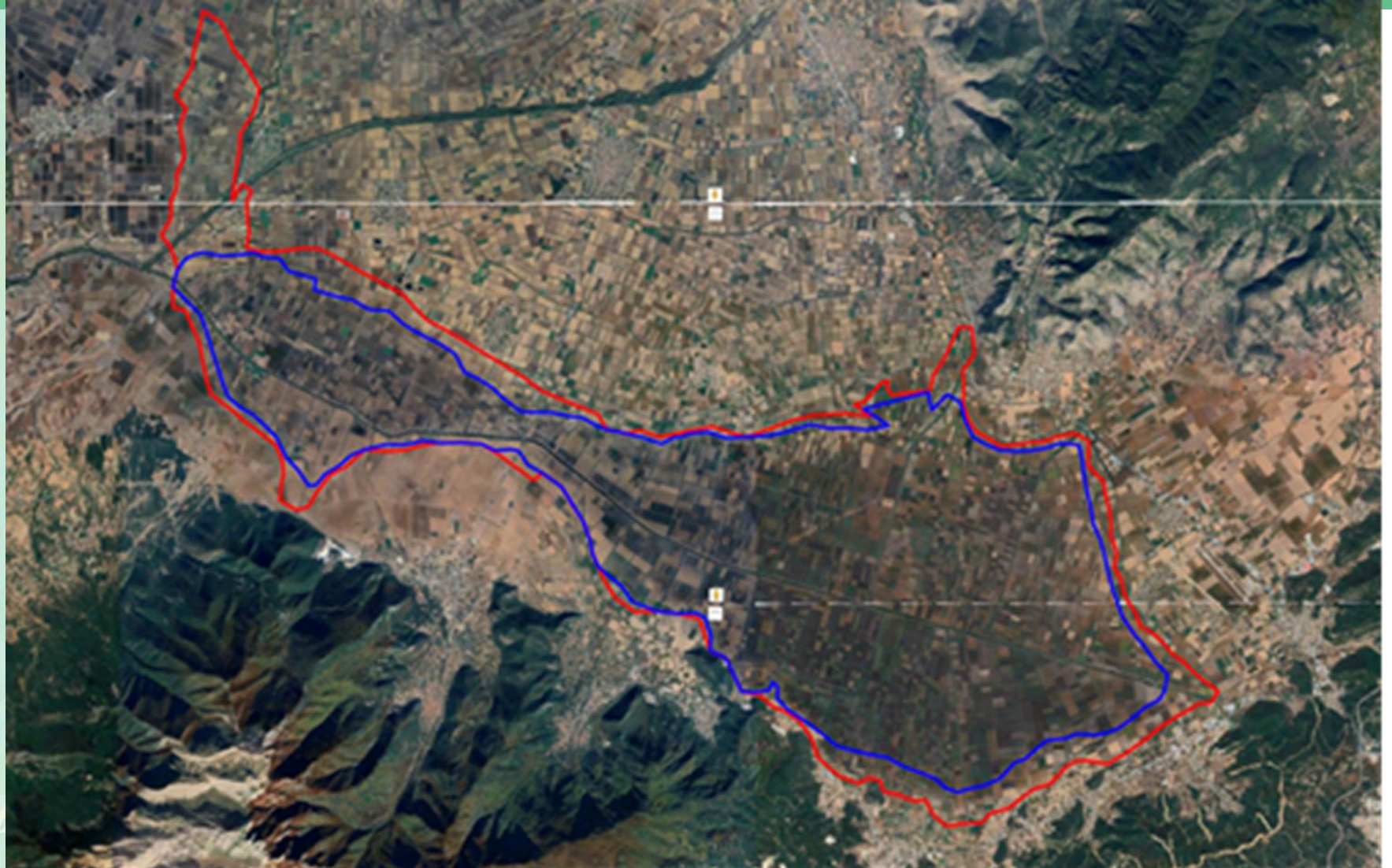
- ▶ Green Urban Resilience Program of the Municipality of Kavala
- ▶ Initiatives in the management of empty plant protection containers
- ▶ Initiatives in the utilization of Geothermal energy
- ▶ Participation in Strategic Planning of the C.A.P. (common agriculture policy)
- ▶ Scientific Committee for the protection and development of the Philippoi Peatlands
- ▶ Participation in Spatial, Operational and Strategic Plans of Municipalities and Administrative Regions
- ▶ Contribution to the optimal layout of the TAP Pipeline for environmental reasons
- ▶ Information and Promotion of Agroforestry
- ▶ Various other scientific committees for submission of proposals (ESKI KAPOU, Strymon, Kerkini, Foudoukli, etc.)





# Our experience in NbS implementation

Peatland of Philippoi, the biggest surface carbon storage in the Balkans, which is cultivated and is highly productive





# Our experience in NbS implementation

In order to preserve the largest deposit of surface carbon in Greece and in all the Balkans, which is the Philippi peatland, a dried-up lake area assigned for agricultural use in 1936 and which proved to be particularly productive. Our aim is this area to remain productive in the future, our branch implemented various measures, or proposed measures adopted by the state such as:



- Campaign to prevent the burning of crop residues by farmers and the implementation of natural methods such as their incorporation, grazing and no-till to protect the oxidation, the soil subsidence and the destruction of Peatland.
- Our proposal to the state, for the adoption by it of Codes of Good Agricultural Practice for the Philippi peatland, within the framework of the obligations of the K.A.P., a proposal that was accepted became the law of the state on 3-12-2025
- Proposal for an Agri-Environmental Program in the same area.





# Before I leave you....

Yesterday you have visited the stream of N. Peramos  
It is not an “innocent” stream...

It can floods. And it can cause many damages to the inhabitants.

On the 15<sup>th</sup> of October 2021 we had a heavy rain. The flooding of the stream took with it plants, branches from pruning, garbage, thrown debris, vegetation from the bed of the stream, and everything you can imagine!!

I took in 2 short videos, one day after the flooding.

<https://www.youtube.com/shorts/ndfcNqAXfLQ>

<https://www.youtube.com/shorts/p6lPshnZBCg>





# STAY IN TOUCH



[www.geotee-anmak.gr](http://www.geotee-anmak.gr)

[geoteeam@otenet.gr](mailto:geoteeam@otenet.gr)



<https://www.youtube.com/@Geotechnical-Chamber-of-Greece>





# Thank you!

Venizelou 55 – 1<sup>ος</sup> floor

Kavala, T.K. 65403

Telephone: 00302510222942

[www.geotee-anmak.gr](http://www.geotee-anmak.gr) , [geoteeam@otenet.gr](mailto:geoteeam@otenet.gr)